

Ready. Responsive. Radically Inclusive.

At least one out of four families in your congregation is affected by a mental illness/brain disorder or disability.
The time is right to join the conversation about how you can be a leader.



“WIDENING THE WELCOME II: INCLUSION FOR ALL”

A National Gathering

**September 29-October 1, 2011
Doubletree Hotel, Columbus, OH**

*DEVELOPING THE LIFE OF CONGREGATIONS TO INCLUDE
PERSONS WITH DISABILITIES AND PERSONS WITH MENTAL
ILLNESSES/BRAIN DISORDERS AND THEIR FAMILIES*

Sponsored by the
United Church of Christ
(UCC) Disabilities
Ministries and the UCC
Mental Illness Network.

**UNITED CHURCH
OF CHRIST**

www.wideningthewelcome.com

Questions: revalan2004@comcast.net

Welcome!

Dear Friends and Colleagues,

We invite you to the second national Conference jointly hosted by the United Church of Christ Disabilities Ministries (UCC DM) and the United Church of Christ Mental Illness Network (UCC MIN). It will be in Columbus, OH, from Thursday, September 29 through Saturday, October 1, 2011. (Sunday, October 2 is an extra day and is an option.)

The theme is **Widening the Welcome II: Inclusion for All.**

In Matthew we read,

“Whoever welcomes you welcomes me, and whoever welcomes me welcomes the one who sent me.” (10:40)

Congregations are groups of people called to be welcoming and inclusive communities. Welcome embraces the involvement of everyone, including people who have been touched by or have experienced a mental illness/brain disorder and/or a disability, apparent or unapparent. National statistics indicate that at least one out of four families are in some way affected by these experiences. This is true in our congregations and for us on the Planning Team.

We hope in this National Conference to:

- ♦ educate about mental illnesses/brain disorders and disabilities;
- ♦ learn how to develop A2A (Accessible to All) Covenants and Mental Health Ministries in your congregation;
- ♦ share best practices by telling stories, learning from each other, and networking; and
- ♦ offer spiritual support group experiences and worship together.

Keynote speakers who will be with us for the entire Conference are Thomas Reynolds, Carolyn Thompson, Christine Guth, and J. Bennett Guess. Please see more information about our Featured Speakers in this registration form. There will be six workshops offered three times with the keynote speakers and national and local leaders. There will be time to share in CORE groups and a Journal will be offered to each participant.

Those who stay through Sunday afternoon will have the opportunity to worship locally, perhaps including an opportunity to offer leadership in local church worship services or adult educational programs.

This promises to be an enriching, connecting and motivating Conference. We look forward to welcoming you in Columbus.

Grace and peace,

Peggy Dunn, Chair, UCC DM
Alan Johnson, Chair, UCC MIN

For more information or with questions:
revalan2004@comcast.net



SCHEDULE AT A GLANCE

Thursday, September 29

- 1:00-4:00 p.m. Registration open
- 4:15-5:30 p.m. Welcome and Opening Worship
Welcome by Peggy Dunn and Alan Johnson
Craig Rennebohm, preaching, “A Tale of Two Neighborhoods”
- 5:45-7:00 p.m. Opening Banquet
Welcome and Grace by Host Conference
Minister, Bob Molsberry, Overview of the
Conference, My Journal, CORE Groups,
Introductions
- 7:15-8:00 p.m. Plenary Keynote: Carolyn Thompson,
“Enlarge the Site of your Tent”
- 8:15 p.m. CORE Groups I

Friday, September 30

- 7:00-8:15 a.m. Breakfast
- 7:30-10:00 a.m. Registration
- 8:30 a.m. Morning Devotions
- 9:00 a.m. Plenary Keynote: Tom Reynolds,
“Witnessing Vulnerability: On Accessing the
Compassionate Church” I
- 10:00 a.m. Break
- 10:30 a.m.-12:00 p.m. Workshops I
- 12:15 p.m. Luncheon Presentation: Christine Guth,
“From Cure to Community: Biblical Under-
standings to Challenge the Stigma of Disability”
- 1:45-3:00 p.m. Sabbath Break/Movie Options
- 3:00-4:30 p.m. Workshops II
- 4:45-5:45 p.m. CORE Groups II
- 6:00 p.m. Dinner
- 7:30-8:30 p.m. Presentation: Bob Molsberry and Panel,
“Who Is Included?”
- 8:30-9:00 p.m. Evening Vespers
- 9:15 p.m. Hospitality Time

Saturday, October 1

- 7:00-8:15 a.m. Breakfast
- 7:30-10:00 a.m. Registration
- 8:30 a.m. Morning Devotions
- 9:00 a.m. Plenary Keynote: Tom Reynolds,
“Witnessing Vulnerability: On Accessing the
Compassionate Church” II
- 10:00 a.m. Break
- 10:30 a.m. Workshops III
- 12:00-1:45 p.m. Lunch: Closing Worship and
Commissioning: Ben Guess, “A Church That
Jesus Would Join”
- 2:00 p.m. Optional Planning by Regions
and Envisioning Future.

Sunday, October 2

(optional, extra cost for another night lodging)

- Attending Local Worship Services
- Lunch on your own and/or with Church Members

KEYNOTE SPEAKERS



Thomas E. Reynolds is Associate Professor of Theology at Emmanuel College. Committed to an interdisciplinary and relational vision of theology, his teaching seeks to deepen Christian engagements with difference and promote compassionate justice. As a father with a son who is on the autism spectrum and has accompanying diagnoses of mental illness, he has become especially interested in opening up the way people of faith think about and welcome people with disabilities into community life. He is the author of *Vulnerable Communion: A Theology of Disability and Hospitality*.



Carolyn Thompson, M.Div. from Episcopal Divinity School, has focused her energies on raising awareness and understanding of disability and access issues in congregations and larger church bodies. She retired last year from the Commission for Persons with Disabilities in Cambridge, MA and helped draft theological statements on disability for the Massachusetts and then the World Council of Churches (WCC), and is part of the Ecumenical Disability Advocates Network (EDAN) of the WCC. She has served on the Disabilities Ministries and the Wider Church Ministries Boards of the United Church of Christ (2003-2009). She has two grown daughters and is a person with a lifelong disability.



J. Bennett Guess is Executive Minister for Local Church Ministries of the United Church of Christ and a member of the UCC's five-person Collegium of Officers. He has worked on the UCC's national staff for 11 years and was a local church pastor for 12 years in Kentucky while emphasizing God's wide welcome.



Christine Guth is Program Director for Anabaptist Disabilities Network (ADNet), a disability advocacy organization affiliated with Mennonites and related denominations. She is a licensed minister with Mennonite Church USA and is a founder and leader of a thriving support group in Goshen, Indiana, for parents of children on the autism spectrum and a graduate of the Partners in Policymaking Academy of the Indiana Governor's Council for People with Disabilities. She is grateful for ongoing learning that comes from a personal journey through mental illness and from people she loves who teach her about living with diverse disabilities.

FEATURED LEADERS



Kim Johnson is a clinical neuropsychologist who specializes in understanding and evaluating the relationship between brain disorders and behavior. She works with neuropsychological evaluations and evaluates individuals four years old through senior adult for a wide range of learning problems, Autism Spectrum disorders, ADHD, mood disorders, dementias, brain injuries, strokes and various neurodegenerative disorders. Her Doctorate degree was in Clinical Psychology and she completed two post-doctorate programs: a one-year program in school psychology and a two-year program in pediatric and adult neuropsychology.



Bob Molsberry is Conference Minister for the Ohio Conference of the United Church of Christ. A wheelchair-user since a 1997 hit-and-run accident, Bob is the author of two books on adjusting to the culture of disability: *Blindsided by Grace: Entering the World of Disability* and *Tour de Faith: A Cyclist's Lessons for Living*. He is former vice chair for UCC Disabilities Ministries. Bob is an avid athlete and enjoys competing in marathon and triathlon events.



Vel Garner is past Director of the Gilliam Youth Services Center and Associate Director of the Division of Youth Corrections in Denver and was responsible for all of Program and Treatment Services for the entire state of Colorado. She is a charter member of the Colorado Black Nurses organization, a founding member of N.U.R.S.E.S. of Colorado, a support group for nurses with substance abuse problems. She has a M.S. in Nursing Administration, and her Doctorate in Public Administration, Policy, Public Management is in progress. She received the University of Colorado Lifetime Achievement in Nursing Award.



Kirk Moore is the pastor of Union Congregational United Church of Christ, in Somonauk, IL. He's a writer, songwriter, and guitar teacher, too! Kirk serves as the web administrator for Widening the Welcome. You can catch up with Kirk on his blog, (kirkogitation.com) on Twitter, (@[kirkmoore](https://twitter.com/kirkmoore)) and yes, even on Facebook. Kirk, wife Cassie and their three children live in Warrenville, IL.

FEATURED LEADERS



Terri L. Tyson holds a Masters of Divinity from United Theological Seminary and a Masters of Science in Community Counseling from the University of Dayton. She ordained in covenant with the United Church of Christ. She is a licensed Professional Counselor by the State of Ohio and certified by the National Board of Certified Counselors.



Jeanne Ann Tyler is a co-pastor with her husband John to the folks of Saint Paul United Church of Christ. John and Jeanne have two adult sons who live in St. Paul, MN. Jeanne is a person with life-long disabilities and an acquired one within the last few years. She has chosen to understand the life-long ones as gifts and burdens. Jeanne's interests are in theology, pastoral care and opera.



Peter E. Bauer is a United Church of Christ Minister. He also serves as a Licensed Clinical Social Worker and Licensed Marriage and Family Therapist working for the South Texas Veterans Health Care System San Antonio, TX. Peter also serves as a Lieutenant Colonel, Medical Service Corps, Army Reserve.



Kelli Parrish Lucas, M.Div., has discerned that the issue of accessibility and our churches is part of her call to ministry. Kelli lives with all of the both/ands of having being born with disability, and acquiring disabilities, as well as a passion for exploring all the topics of disability ministries with others. Kelli completed research into the ecumenical responses to disability in addition to studying disability ministry/theology in seminary. Kelli has served as a chaplain in mental health facilities and is currently serving as a per diem hospice chaplain in San Diego County, CA.



Barbara T. Baylor is the Minister for Health Care Justice, Justice and Witness Ministries (JWM) of the UCC. She assists the UCC in all its settings to encourage an understanding of health and health care as issues of social and economic justice and is committed to quality, accessible and affordable health care for all. She has experience working in public health with many diverse groups, including the faith community, to provide leadership, empowerment and capacity building programs that focus on health care justice, community wellness, health promotion, disease prevention and the reduction of health disparities.

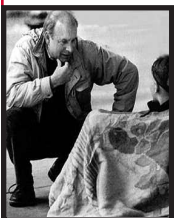


CJ Siroky is trained as a Biochemist and worked several years helping to develop psychiatric medications. She became a consumer herself in 2001 after being diagnosed with Major Depressive Disorder and Dissociative Identity Disorder. In 2006, she became the leader of the Mental Health Awareness team at First Congregational United Church of Christ in Indianapolis, IN.

Marie Siroky is a graduate from Christian Theological Seminary in Indianapolis, IN. She served as Pastoral Associate to First Congregational United Church of Christ in Indianapolis, IN, has served in many Chaplaincy roles and has been an advocate for those mental illness and brain disorders. She became familiar with stigmas in her work with those with HIV/AIDS starting in the mid-90's. CJ and Marie Siroky have been together over 20 years.



Mary Alice Suter, Masters in Divinity from Eden Theological Seminary, is a member at First Congregational United Church of Christ in Springfield, IL where she worked as a Christian Education Director. Mary Alice is a mental health consumer and advocate for those with brain disorders and disabilities.



Craig Rennebohm is a UCC pastor who has worked for the last 23 years on the streets with individuals who are homeless and struggling with serious mental illness, substance abuse issues and PTSD. He is the author of *Souls in the Hands of a Tender God*, and will be leading a series of three workshops on creating caring congregations.

FEATURED LEADERS



Lynda Bigler, pastor, Congregational UCC, Humboldt, IA, had a career banking and became a full-time, stay-at-home mother. She served as Girl Scout leader and cookie sales committees; Cub Scout den leader; Boy Scout troop treasurer; alumni National Chair and Director of the Brown University Alumni Schools Committees, and the Disability Services Advisory Council of Multnomah County (Oregon). Visually impaired since birth, Lynda takes particular interest in accessibility in educational settings.



Ken Gilbert, M.D., has supported village based health systems in eleven countries, served as medical director for a large state psychiatric hospital, and organized village development and AIDS education in Cote D'Ivoire. He has been a prison psychiatrist and now works with a large mental health provider for persons who are seriously and chronically ill and offers treatment for substance abuse. In Nov 2009 he suffered a massive brain bleed. Since then he has returned to employment as a psychiatrist.



Brett Webb-Mitchell, Presbyterian pastor, an advocate with people with disabilities, has written curricula relating to people with disabilities in faith communities, and was writer/consultant for the PCUSA's statement on inclusive congregations, "Living into the Body of Christ: Toward Full Inclusion of People with Disabilities." His latest book is *Beyond Accessibility*. He has served eight congregations; taught at Duke Divinity School; is Visiting Associate Professor at NC Central University; and is Director of the religious non-profit, School of the Pilgrim.



L. Scott Lissner, American with Disability Act Coordinator, and the ADA Coordinator & 504 Compliance Officer for the Ohio State University. He is an associate of the John Glenn School of Public Policy and is a lecturer for the Moritz College of Law, the Knowlton School of Architecture and Disability Studies. He serves on the Ohio Governor's Council on People with Disabilities, ADA-OHIO, the Columbus Advisory Committee on Disability Issues and as President Elect for the Association of Higher Education and Disability.

CHAIRS OF THE HOSTING ORGANIZATIONS



Peggy Wolfe Dunn serves as the current chair of the UCC Disabilities Ministries Board. She is ordained in the UCC, is pastor of the Union Congregational Church UCC of South Bristol Maine and the Director of the Maine Conference Academy for Congregational Life and Leadership. She has a passion about inclusion, resourcing and encouraging congregations to become Accessible to All (A2A). She has been affected by mental illness, substance abuse and acquired brain injury in her extended family.



Alan Johnson is the current chair of the UCC Mental Illness Network, the chair of his church's Mental Health Ministry, and a founder of the Interfaith Network on Mental Illness (Boulder, CO). He worked in the national setting of the UCC from 1979-1995. He has been affected by mental illness, substance abuse, and suicide in his family and has recovered from a stroke.

Workshop Information

The schedule will include 18 workshop sessions. Some workshops will be repeated; others may continue through more than one session. The following is a partial list:

- ♦ *Mental Health 101-Mental Health Ministry Across the Lifespan*
- ♦ *Organizing a Mental Health Team in the Local Congregation*
- ♦ *Companionship Training-One to One Support for Healing and Recovery*
- ♦ *A2A Inclusion Team in your church*
- ♦ *Theological Underpinning of Disability Ministry-Stories of Inclusion of Persons with Disabilities and their Families*
- ♦ *Current and Future Interventions for Returning Veterans and Their Families Suffering From Post-Traumatic Stress Disorder*
- ♦ *Transformative Experiences-The Redeeming Nature of Brain Disorders*
- ♦ *Prisons from the Inside: Mental Illness/Disabilities and the Church's Response*
- ♦ *Coming Out To Your Congregation: Clergy and Laity Living with Disabilities*
- ♦ *NAMI (National Alliance on Mental Illness): Talking Family to Family*

Planning Team 2011 Conference

Peter Bauer, San Antonio, TX
Barbara Baylor, Cleveland, OH
Bob Dell, Sandwich, IL
JC Dollar, St. Joseph, MO
Peggy Dunn, Bowdoinham, ME
Michelle Hintz, Cleveland, OH
Alan Johnson, Boulder, CO
Norma Mengel, St. Paul, MN
Kirk Moore, Somonauk, IL
Kelli Parrish Lucas, San Diego, CA
Kevin Petitt, Boulder, CO
CJ Siroky, Indianapolis, IN
Mary Alice Suter, St. Louis, MO
Terri Tyson, Kettering, OH
Kathi Wilson, Marthasville, MO

Conference Website: www.wideningthewelcome.com

For more information or with questions:

revalan2004@comcast.net

Registration Questions? E-mail: caitlin@conferenceoffice.com

CONFERENCE LOCATION

DoubleTree Hotel Columbus Worthington
175 Hutchinson Avenue
Columbus, Ohio, 43235
1-800-222-8733

DoubleTree Reservation Information

Call: call the hotel at 1-800-222-8733 or 614-885-3334 by September 21st and tell them you are with the UCC to receive the discounted conference rate of \$107.

Online: Click [HERE](#) to reserve online by September 21st and receive the discounted conference rate.

Note: After September 21st reservations will be provided on a space available basis at prevailing rates. Call the DoubleTree directly to see if discounted rooms are still available.

Conference attendees receive complimentary hot breakfast at the DoubleTree each day. Breakfast is located in the Crosswoods Bar & Grill from 6:00 a.m.-10:00 a.m.

Transportation: The DoubleTree Hotel is located 15 minutes from the Port Columbus International Airport.

- A **shuttle** to/from Port Columbus International Airport (CMH) will be **complimentary** for those that notify the hotel of their flight arrangements prior to arrival. Call or email Daniel Nelson directly: (614) 431-4443 or daniel.nelson@prismhotels.com. Please have your guest names, cell phone number, airline, flight number, and date/time of arrival/departure.
- For **driving directions**, see box to the right.
- A **taxi** ride (one way) is approximately \$15.

Parking: Self parking is complimentary to all guests at the DoubleTree hotel.

Hotel Check-in: If early check-in is not available, the hotel will hold your bags so that you may attend sessions.

Roommate List: If you are interested in sharing a room with another person, please call the Conference Office to be included on the roommate list.

ADDITIONAL ROOMING OPTION

Dewire Residence Hall
(Campus of Methodist Theological School in Ohio)
3081 Columbus Pike
Delaware, OH 43015
740-363-1146

7 rooms are available for \$48 per night. Rooms are arranged in suites of two sleeping/living areas with a common bathroom in between. The rooms are completely furnished and all linens will be provided. Rates include all utilities, high-speed internet and cable TV. For reservations, contact Leslie Carole Taylor by phone: 740-362-3126.

Note: Dewire rooms are not ADA compliant. For transportation to/from the meeting site please contact: Leslie Carole Taylor : 740-362-3126



Important Deadline:
The hotel cutoff for discounted rooms is:
September 21st.

Call 1-800-222-8733 for reservations.

DRIVING DIRECTIONS

From the SOUTH - (Cincinnati)

Take I-71 North through Columbus to I-270 West
Take exit #23 heading North towards Delaware (US Rte 23)
Turn right on East Campus View Blvd
Turn right onto High Cross Blvd
When High Cross ends you will be facing the hotel

From the NORTHEAST - (Cleveland)

Take I-71 South to I-270 West
Take exit #23 heading North towards Delaware (US Rte 23)
Turn right on East Campus View Blvd
Turn right onto High Cross Blvd
When High Cross ends you will be facing the hotel

From the WEST- (Indianapolis)

Take I-70 East to I-270 North
Take exit #23 heading North towards Delaware (US Rte 23)
Turn right on East Campus View Blvd
Turn right onto High Cross Blvd
When High Cross ends you will be facing the hotel

From the EAST - (Pittsburgh)

Take I-79 South to I-70 West
Once in Columbus City limits take I-270 N. towards Cleveland
Take exit #23 heading North towards Delaware (US Rte 23)
Turn right on East Campus View Blvd
Turn right onto High Cross Blvd
When High Cross ends you will be facing the hotel

From the NORTHWEST - (Toledo)

Take I-75 South to US Rte 15 East (which becomes US Rte 23 S.)
Turn left on East Campus View Blvd
Turn right onto High Cross Blvd
When High Cross ends you will be facing the hotel

Child Care Options

You may find this link useful in your search for child care: www.babydoves.org. *The conference staff and/or affiliates are not responsible for child care and do not endorse any specific company.*

COLUMBUS/WORTHINGTON ACTIVITIES

During your stay in Columbus you may want to get out and see some great sites. To assist you, here are a few ideas:

-Columbus Convention and Visitors Bureau

<http://www.experiencecolumbus.com/>

-Columbus Zoo and Aquarium, 4850 W. Powell Rd. Phone: 614-645-3550

The Columbus Zoo and Aquarium is a world of adventure that does a world of good. The Zoo is home to more than 8,800 animals representing 650 species from around the globe.

-Ohio Historical Center and Ohio Village, 1982 Velma Ave. Phone: 614-297-2300

The Ohio Historical Center is the headquarters of the Ohio Historical Society and a museum showcasing Ohio's history from the ice age to 1970.

REGISTRATION INFORMATION

Payment and Receipts

- ♦ MasterCard and Visa credit cards are accepted.
- ♦ Pre-payment in full by check or valid credit card is required to qualify for discounted fees. In cases where cards are initially declined, the prevailing fee at the time of approval will be due and charged.
- ♦ Receipts confirming registration will be sent via mail.
- ♦ Please verify the accuracy of your receipt and contact the Conference Office immediately with any changes (caitlin@conferenceoffice.com).
- ♦ In the event that a registrant is entitled to a refund for his/her registration fee, it will be processed via the same method it was paid; for instance if payment was made by credit card, the refund will be processed as a credit to your credit card account.

Services for People with Disabilities

If under the Americans with Disabilities Act you require specific aids or services during the conference, please check the appropriate box on the registration form or contact the Conference Office. Please allow adequate time for arrangements to be made.

How to Register

- ♦ Web—www.wideningthewelcome.com
- ♦ Fax—303-759-8861
- ♦ Mail—Conference Office, 90 Madison Street, Ste. 403, Denver, CO 80206
- ♦ Phone registrations are not accepted.

Payment must accompany registration in order for the Conference Office to process your registration. Be sure to fully complete the registration form — the information requested is important in processing your registration. Early, regular, and onsite registration fees will be applied based on the date registration is received in full at the Conference Office. MasterCard or Visa credit cards must be used to pay all registrations received by web or fax.

Cancellation

- ♦ Requests for refunds must be in writing: fax 303-759-8861 or e-mail: caitlin@conferenceoffice.com
- ♦ Deadline for full refund less \$10 processing fee—September 23, 2011.
- ♦ **After September 23, 2011 no refunds will be made.**
- ♦ There will be no form of refund for "no shows" unless considered a special exception
- ♦ Special exceptions such as family and health emergencies will be handled on a one-on-one basis.

♦ Dates to Remember ♦

September 9: Early registration rate ends

September 10: Regular registration begins

September 21: Book room by this date to receive special rate

September 23: No registration refunds after this date

September 25: Regular registration ends

September 26: Onsite registration begins

September 29-October 1, 2011:

Widening the Welcome II: Inclusion for All

Conference Website

www.wideningthewelcome.com

Conference Office

90 Madison Street
Suite 403

Denver, CO 80206

Phone 303-756-8380

Fax 303-759-8861

Registration Questions? E-mail:
caitlin@conferenceoffice.com

CONFERENCE REGISTRATION FORM

"Widening the Welcome II: Inclusion for All" A National Gathering sponsored by UCC Mental Illness Network and UCC Disabilities Ministries

September 29-October 1, 2011, Columbus, Ohio

- ♦ Use a separate form for each registrant. For extras, make photocopies.
- ♦ Keep a copy of this completed form for your records. ♦Please type or print clearly to avoid name badge errors.

For Office Use Only

Date Rec'd _____ Reg # _____
Amt Pd \$ _____ Ck _____ CC _____
Date Payment Processed _____
Transaction # _____

SECTION A

First name for badge _____
First name _____ Last name _____
Title _____
Organization _____
Mailing address _____
City _____ State _____ Zip _____
Daytime phone _____ Fax _____
E-mail _____

SECTION B

Please indicate your preference for vegetarian meals. Yes No Other special diet requests _____

Do you require any specific aids or services related to disabilities? Yes No

Special accommodations needed: Interpreter Yes No (If yes, indicate sign or oral) _____

CART Yes No Large Print Yes No

Please describe additional needs _____

Note: Please allow adequate time for arrangements to be made.

SECTION C

Included in conference selection:

Full Conference: All sessions, CD, breakfast, coffee/snack breaks, Thursday dinner, Friday lunch, Friday dinner, Saturday lunch

Thursday Only: Thursday sessions, Thursday dinner

Friday Only: Friday sessions, coffee/snack breaks, Friday lunch, Friday dinner

Saturday Only: Saturday sessions, coffee/snack breaks, Saturday lunch

Circle Appropriate Price

	Early by 9/9	Regular 9/10-9/25	On-site after 9/25
<input type="checkbox"/> Full Conference	\$115	\$125	\$135
<input type="checkbox"/> Thursday Only	\$30	\$35	\$40
<input type="checkbox"/> Friday Only	\$60	\$65	\$70
<input type="checkbox"/> Saturday Only	\$30	\$35	\$40

Conference Registration Fee:

\$ _____

SECTION D

Payment Method

Method of Payment MasterCard Visa Check *Make Checks Payable to Conference Office*

Print Name on Card/Check _____

Check/Credit Card # _____ Expiration Date _____

By signing below, I hereby authorize the Conference Office to charge my credit card accordingly if I miscalculated fees. I acknowledge that I have reviewed and agree to all registration policies outlined herein.

Signature _____

Conference Office: 90 Madison St., Ste. 403, Denver, CO 80206
Fax 303-759-8861, Phone 303-756-8380, E-mail caitlin@conferenceoffice.com